



# coolenergy

TEMPERATURE RENTAL

Fan Coil Unit

10kW Rental AHU



## ABOUT THE AIR HANDLER

Cool Energy's 10kW Fan Coil Unit is a light-weight portable unit capable of offering 2,012m<sup>3</sup>/hr air flow.

The unit requires a water source to the integral coil and has quick release water connections, together with a 13 amp single phase standard power connection.

The fan coil is sited internally and has a vertical air discharge grill with louvres. The unit can also be supplied with an optional condensate pump.

## Cool Energy Product Range

Cool Energy can also supply the following equipment:

- Air-cooled rental chiller range from 0.3kW – 1,000kW units.
- Water-cooled rental chiller range from 7.5kW – 1,000kW units.
- Air handling units & fan coils from 5kW – 500kW duties.
- Air conditioning units from 1.3kW – 350kW units.
- Low temperature chillers (-30oC) and fan coils (0oC air off).
- Dehumidifiers (desiccant & electric) 200-10,000m<sup>3</sup>/hr.
- Generator Power with 20KVA – 800KVA fuel tanks and management.
- Air distribution (flexible ducting and perforated air socks).
- Hot water generators and boilers from 25kW – 500kW units.
- Heating (office/warehouse) from 3kW to 200kW electric/indirect/heat pump.



We also provide full installation, transportation, lifting and monitoring.

## TECHNICAL

### 10kW Comfort Fan Coil (for heating and air conditioning)

#### Performance data @ design conditions

Cooling Capacity	kW	10
Sensible Cooling Capacity	kW	9
Air Off Temperature	°C	20
Air On Temperature	°C	25

#### Cooling Operating limits

Min/Max Duty	kW	10/15
Min/Max Air Off Temperature	°C	15/30
Fluid Pressure Drop	kPa	40
Max Working Pressure	kPa	300
Evaporator Water Volume	l	5
Condensate Connection (hose tail)	mm/inches	25/ ½

#### Air Limits

Total Number Fans	0.4kW each	1
Total Airflow	m <sup>3</sup> /hr	2,012
	m <sup>3</sup> /s	0.56
Max Air Throw	m	8

#### Electrical data

Electrical Supply Voltage 1 phase	V	240
Power Connections	A	16 C forme plug or 13 amp std
Max Power Absorbed	kW	1.2
Max Current Absorbed	A	5
Starting Current (Max)	A	9
Recommended Generator Set	kVA	N/A
Control System (motorised 3 way valve)	switch	3 Fan Speed

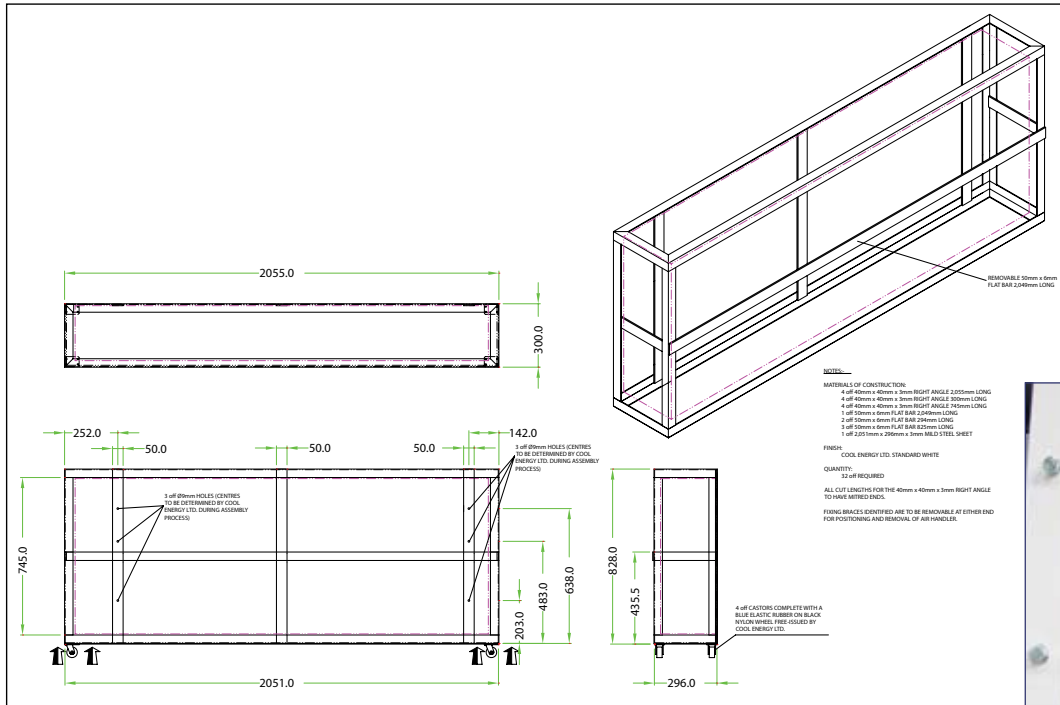
#### Sound Data

Sound Pressure Level at 10 metres (ISO3744)	dB(A)	53
---	-------	----

#### Physical Data

Overall Length	mm	1,960	With Frame 2,051
Overall Width	mm	256	300
Overall Height	mm	732	900
Weight Dry	kg	40	140
Weight + Water/Glycol mix	kg	45	145
Fluid Coupling Size	mm/inch	25/1	With Castors
Fluid Coupling Type	Std	1" Camlock	

## GA DRAWING



### Head Office South

ICS House, Stephenson Road, Calmore Industrial Estate, Totton, SO40 3RY  
 T (+44) 23 8052 7300 F (+44) 23 8042 8366

### Midlands

Unit 82 Plume Industrial Estate, Holburn Hill, Aston, Birmingham B6 7RT  
 T (+44) 121 326 7771 F (+44) 121 327 4114

### North

Floor 2, Caspian House, East Parade, Little Germany, Bradford BD1 5EP  
 T (+44) 1274 740 877 F (+44) 1274 391 708

### Scotland

Unit 5, 53/58 South Avenue, Blantyre Industrial Estate, Blantyre, G72 0XB  
 T (+44) 1698 723308 F (+44) 1698 723309

### Ireland

Unit 2, Kells Enterprise Centre, Cavan Road, Kells, County Meath, Ireland  
 T (+353) 46 925 2934 F (+353) 46 925 2936

We also have four locations in Germany, Holland and Switzerland.

Further information on these locations can be found at [www.coolenergy.eu](http://www.coolenergy.eu)

[www.coolenergy.co.uk](http://www.coolenergy.co.uk)



**coolenergy**

TEMPERATURE RENTAL

Equipment designed to ISO-9001 and all relevant directives. Product improvement is a continual process at Cool Energy and we reserve the right to change the design and specifications without notice or obligation. Availability is subject to change without notice. Contact your local Cool Energy depot for availability. © 2011 Cool Energy. All rights reserved.