



coolenergy

TEMPERATURE RENTAL

FOCS 2602/SL

500kW Rental Chiller



ABOUT THE CHILLER

Cool Energy's 500kW FOCS chiller has the latest energy-saving Bitzer screw compressors (2), offering a wide temperature range of -12°C to 15°C water leaving temperature and 12.5% - 100% capacity control.

The chiller is fully Eurovent Compliant and offers the zero ozone depleting HFC refrigerant R134a and manufactured to the latest environmental ISO14001 controls.

With low noise (57dB(a)) operation and compact footprint, the FOCS unit is currently the smallest chiller/kW available in the UK.

Cool Energy Service

Cool Energy can also supply the following equipment:

- Air-cooled rental chiller range from 0.3kW - 1,000kW units.
- Water-cooled rental chiller range from 7.5kW - 1,000kW units.
- Air handling units & fan coils from 5kW - 500kW duties.
- Air conditioning units from 1.3kW - 350kW units.
- Low temperature chillers (-30°C) and fan coils (0°C air off).
- Dehumidifiers (desiccant & electric) 200 - 10,000m³/hr.
- Generator Power with 20KVA - 800KVA fuel tanks and management.
- Air distribution (flexible ducting and perforated air socks).
- Hot water generators and boilers from 25kW - 500kW units.
- Heating (office/warehouse) from 3kW to 200kW electric/indirect/heat pump.

We also provide full installation, transportation, lifting and monitoring.



TECHNICAL

HVAC & Process Cooling Chiller: 520kW FOCS 2602/SL

Performance data @ design conditions

Cooling Capacity	kW	520
Operation Fluid Temperature IN/OUT	°C	12/7
Design Ambient Temperature	°C	30
Fluid Flow Min/Max	m ³ /hr	56.8/152.0
	l/s	15.7/42.2

Operating limits

Min/Max Ambient Temperature	°C	-18/43
Min/Max Leaving Fluid Temperature	°C	-12/15
Evaporator Pressure Drop	kPa	37.8
Max Working Pressure	kPa	1,000
Evaporator Water Volume	l	200

Electrical data

Electrical Supply Voltage 3 phase	V	400
Chiller Power Connections		12mm lugs
Cable Connection (240mm ² per phase)	M12	3 core + earth, no neutral
Max Power Absorbed	kW	197
Max Current Absorbed (@7°C)	A	370
Starting Current (Max)	A	428
Pre-Heating Crankcase Supply	V	230
AUX Supply Connection		32A Ceeform
Recommended Generator Set	kVA	400
Control System		W3000

Refrigerant System

Bitzer Screw Compressors (2 circuits) 6 step capacity (12.5 - 100% Variable Capacity)		2
Refrigerant (Zero ozone deletion potential)	HFC	R134a
Refrigerant/oil charge	Kg	126/44

Fans

Total Number	1.1kW each	10
Total Airflow	m ³ /hr	30.6

Sound Data

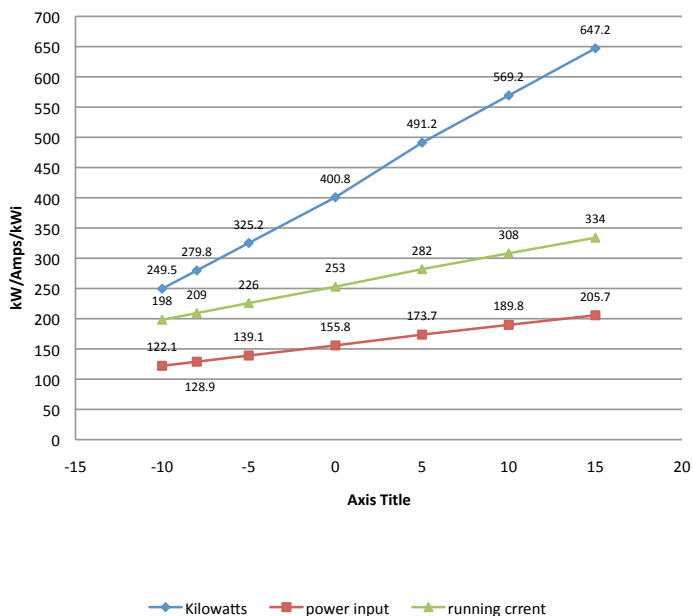
Sound Pressure Level at 10 metres (ISO3744)	dB(A)	57
(see separate guide attached for octave band detail)		

Physical Data

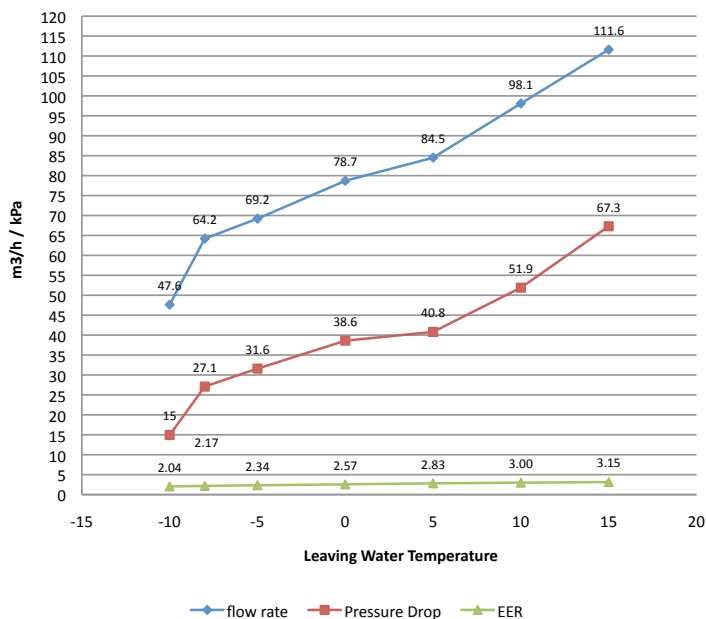
Overall Length	mm	4,900
Overall Width	mm	2,260
Overall Height	mm	2,430
Weight	kg	6,060
Fluid Coupling Size	mm/inch	150/6"
Fluid Coupling Type	choice	PN16 Flange/bauer
IPLV Rating		4.07
ESEER Rating		3.60

PERFORMANCE

**FOCS 2602SL
in 30°C ambient**



**FOCS 2602SL
in 30°C ambient**



Sound Levels

Measurements are taken in accordance with the standard ISO 3744. Sound pressure average value obtained in free field on a reflective surface at a distance of 10m from the longer side of the machine at a height of 1.6m +/- 2 under full load in normal conditions.

For measurements closer than 10m add the following: 5m +6, 3m +10 and 1m +15

Octave bands (H3)								Sound Pressure
63	125	250	500	1000	2000	4000	8000	
Sound Power Level dB(A)								dB(A) 10m
49	47	50	54	55	46	34	27	57.0

Additional Services: Cool Energy can provide attenuated equipment and services to help further reduce the impact of our equipment to help meet your specific site requirements.

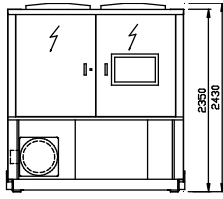
Sub 5 °C Water Applications

When installing a chiller and/or air handling piece of equipment, we would recommend the use of the following mix of Glycol for the systems total volume of fluid. This will protect the equipment against internal freezing and failure (e.g. 200 litre volume @ 0 °C foodsafe equals 30 litres of Glycol and 170 litres of water). Weekly checks should be made by the site maintenance engineer/manager to ensure the correct mix is present in the system.

Water/Glycol Recommendations and Guide:

Water Temperature			5 °C	0 °C	-5 °C	-10 °C	-15 °C
Industrial Grade	Mono Ethylene Glycol	% Mix	5	10	20	25	30
Foodsafe Grade	Mono Propylene GLycol	% Mix	10	15	20	25	30
Bio Foodsafe Grade (made from vegetable extracts)	Biodegradable Glycol	% Mix	10	15	20	25	30

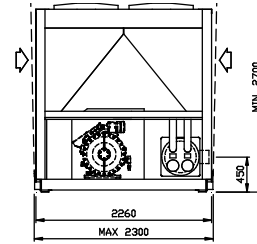
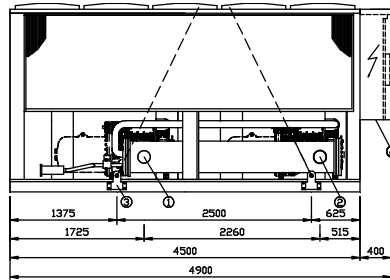
GA DRAWING



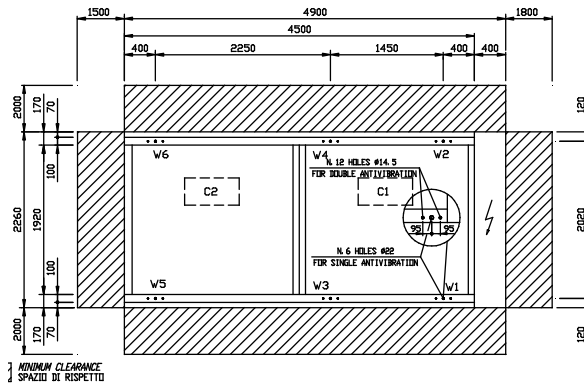
EVAPORATOR WATER INLET FLEXIBLE JOINT Ø6" (Ø)
 ENTRATA ACQUA EVAPORATORE GIUNTO FLESSIBILE Ø6" (Ø)
 EVAPORATOR WATER OUTLET FLEXIBLE JOINT Ø6" (Ø)
 USCITA ACQUA EVAPORATORE GIUNTO FLESSIBILE Ø6" (Ø)

LIFTING POINTS
 PUNTI DI SOLLEVAMENTO

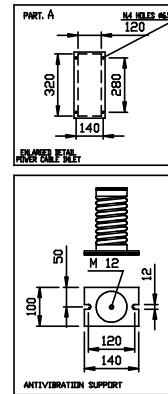
OPTIONAL FLANGED CONNECTIONS DN150 PN16
 ATTACCHI FLANGIATI OPZIONALI DN150 PN16



SUPPORTING BASEMENT - BASE D'APPOGGIO



MINIMUM CLEARANCE
 SPAZIO DI RISPETTO



Head Office South

ICS House, Stephenson Road, Calmore Industrial Estate, Totton, SO40 3RY
 T (+44) 23 8052 7300 F (+44) 23 8042 8366

Midlands

Birmingham Science Park Aston, Faraday Wharf, Holt Street, Birmingham B7 4BB
 T (+44) 121 326 7771 F (+44) 121 327 4114

North

Floor 2, Caspian House, East Parade, Little Germany, Bradford BD1 5EP
 T (+44) 1274 740 877 F (+44) 1274 391 708

Scotland

Unit 5, 53/58 South Avenue, Blantyre Industrial Estate, Blantyre, G72 OXB
 T (+44) 1698 723308 F (+44) 1698 723309

Ireland

T (+353) 46 925 2934 F (+353) 46 925 2936



We also have four locations in Germany, Holland and Switzerland.
 Further information on these locations can be found at
www.coolenergy.eu

www.coolenergy.co.uk



Equipment designed to ISO-9001 and all relevant directives. Product improvement is a continual process at Cool Energy and we reserve the right to change the design and specifications without notice or obligation. Availability is subject to change without notice. Contact your local Cool Energy depot for availability. © 2011 Cool Energy. All rights reserved. E & OE