



coolenergy

TEMPERATURE RENTAL

TAE Evo 121/161

40kW/45kW Rental Chillers



ABOUT THE CHILLER

Cool Energy's 40kW/45kW TAE Evo chillers have integral thermal buffer tanks in order to give a controlled band of temperature control to your process or HVAC system.

This chiller offers a wide temperature range of -10°C to +20°C water leaving and can be modified to -15°C where necessary. The unit is also supplied with an integral process pump together with quick-release water and power connections for a fast start-up.

With low noise operation and compact footprint, the TAE Evo chillers are fully packaged to simplify installation on site and easy set up and control.

Cool Energy Product Range

Cool Energy can also supply the following equipment:

- Air-cooled rental chiller range from 0.3kW – 1,000kW units.
- Water-cooled rental chiller range from 7.5kW – 1,000kW units.
- Air handling units & fan coils from 5kW – 500kW duties.
- Air conditioning units from 1.3kW – 350kW units.
- Low temperature chillers (-30°C) and fan coils (0°C air off).
- Dehumidifiers (desiccant & electric) 200 - 10,000m³/hr.
- Generator Power with 20KVA – 800KVA fuel tanks and management.
- Air distribution (flexible ducting and perforated air socks).
- Hot water generators and boilers from 25kW – 500kW units.
- Heating (office/warehouse) from 3kW to 200kW electric/indirect/heat pump.

We also provide full installation, transportation, lifting and monitoring.



TECHNICAL

HVAC & Process Cooling Chiller: 40kW/45kW TAE Evo 121/161 Units

Performance data @ design conditions

		TAE Evo 121	TAE Evo 161
Cooling Capacity	kW	40	45
Operation Fluid Temperature OUT/IN	°C	7/12	7/12
Design Ambient Temperature	°C	30	30
Fluid Flow Min/Max	m ³ /hr	3.0/18	3.7/18
	l/s	0.8/5.0	1.03/5.0

Operating limits

Min/Max Ambient Temperature	°C	-18/43	18/43
Min/Max Leaving Fluid Temperature	°C	-5/15	-5/15
Evaporator Pressure Drop	kPa	41	41
Max Working Pressure	kPa	600	600
Evaporator Water Volume	l	225	255

Electrical data

Electrical Supply Voltage 3 phase	V	400	400
Chiller Power Connections		32amp CForme Plug	63amp CForme Plug
Cable Connection	6mm ² /16mm ²	3core+earth neutral	3core+earth neutral
Max Power Absorbed	kW	18.0	21.0
Max Current Absorbed	A	32.0	37.0
Starting Current (Max)	A	42.0	47.0
Pre-Heating Crankcase Supply	V	N/A	N/A
AUX Supply Connection		N/A	N/A
Recommended Generator Set	kVA	20	20
Control System		Dixell	Dixell

Refrigerant System

Maneurop Scroll Compressors (1 circuit)		1	1
(0 - 100% Capacity)			
Refrigerant (Zero ozone depletion potential)	HFC	R407c	R407c

Fans

Total Number	0.79kW each	2	2
Total Airflow	m ³ /hr	13.5	13.5

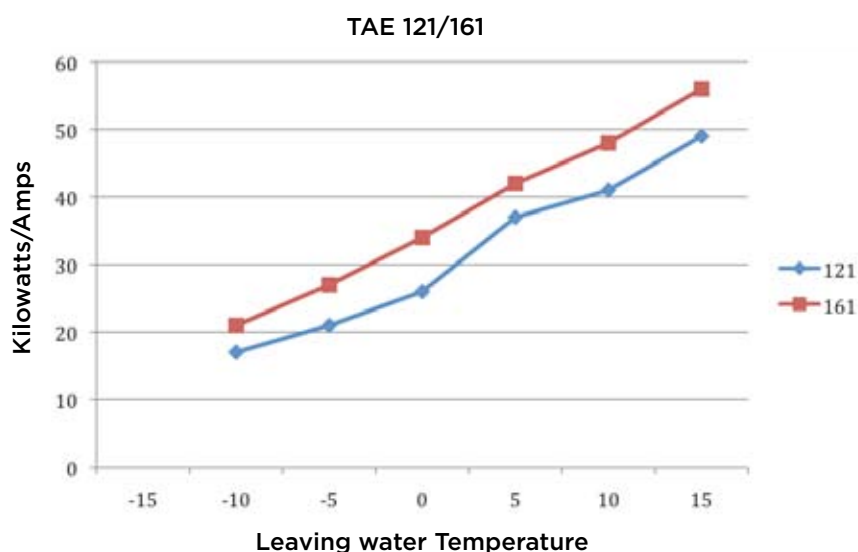
Sound Data

Sound Pressure Level at 10 metres (ISO3744)	dB(A)	55.0	55.0
(see separate guide attached for octave band detail)			

Physical Data

				With Frame
Overall Length	mm	1,860	1,860	2,310
Overall Width	mm	760	760	780
Overall Height	mm	1,447	1,447	1,760
Weight	kg	500	500	680
Fluid Coupling Size	mm/inch	50/2	50/2	
Fluid Coupling Type	2"	Bauer	Bauer	

PERFORMANCE



Sound Levels

Measurements are taken in accordance with the standard ISO 3744.

Sound pressure average value obtained in free field on a reflective surface at a distance of 10m from the longer side of the machine at a height of 1.6m +/- 2 under full load in normal conditions.

For measurements closer than 10m add the following: 5m +6, 3m +10 and 1m +15

Octave bands (H3)								Sound Pressure
63	125	250	500	1000	2000	4000	8000	
Sound Power Level dB(A)								dB(A) 10m
36.0	52.9	63.9	72.7	80.3	76.3	74.2	62.1	55.0

Additional Services: Cool Energy can provide attenuated equipment and services to help further reduce the impact of our equipment to help meet your specific site requirements.

Sub 5°C Water Applications

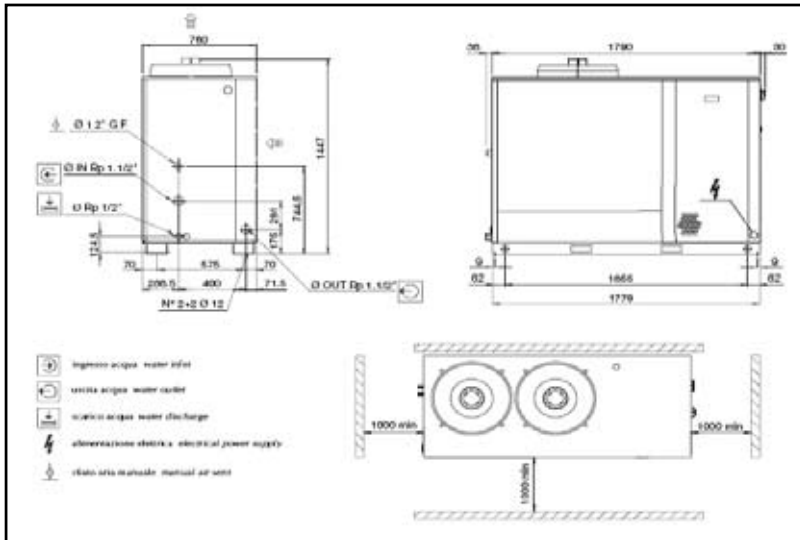
When installing a chiller and/or air handling piece of equipment, we would recommend the use of the following mix of Glycol for the systems total volume of fluid. This will protect the equipment against internal freezing and failure (e.g. 200 litre volume @ 0°C foodsafe equals 30 litres of Glycol and 170 litres of water). Weekly checks should be made by the site maintenance engineer/manager to ensure the correct mix is present in the system.

Water/Glycol Recommendations and Guide:

Water Temperature			5 °C	0 °C	-5 °C	-10 °C	-15 °C
Industrial Grade	Mono Ethylene Glycol	% Mix	5	10	20	25	30
Foodsafe Grade	Mono Propylene GLycol	% Mix	10	15	20	25	30
Bio Foodsafe Grade (made from vegetable extracts)	Biodegradable Glycol	% Mix	10	15	20	25	30

Glycol can be purchased from Cool Energy in 25 litre, 205 litre and 1,000 litre drums.

GA DRAWING



Head Office South

ICS House, Stephenson Road, Calmore Industrial Estate, Totton, SO40 3RY
 T (+44) 23 8052 7300 F (+44) 23 8042 8366

Midlands

Birmingham Science Park Aston, Faraday Wharf, Holt Street, Birmingham B7 4BB
 T (+44) 121 326 7771 F (+44) 121 327 4114

North

Floor 2, Caspian House, East Parade, Little Germany, Bradford BD1 5EP
 T (+44) 1274 740 877 F (+44) 1274 391 708

Scotland

Unit 5, 53/58 South Avenue, Blantyre Industrial Estate, Blantyre, G72 0XB
 T (+44) 1698 723308 F (+44) 1698 723309

Ireland

T (+353) 46 925 2934 F (+353) 46 925 2936

We also have four locations in Germany, Holland and Switzerland.
 Further information on these locations can be found at
www.coolenergy.eu

www.coolenergy.co.uk




coolenergy
 TEMPERATURE RENTAL

Equipment designed to ISO-9001 and all relevant directives. Product improvement is a continual process at Cool Energy and we reserve the right to change the design and specifications without notice or obligation. Availability is subject to change without notice. Contact your local Cool Energy depot for availability. © 2011 Cool Energy. All rights reserved.